



Professional Pavement Products



**PROJECT
SPOTLIGHT**

MAKING SAFER ROUTES TO SCHOOL



Florida High School Calms Traffic with Orca Lane Separator™

Project Spotlight

Like many school crossings, Fletcher High School in Jacksonville, Florida has had their share of pedestrian versus car incidents.

Students: 2194

Full time teachers: 103

Location



Date

February 2018

Problem



Pedestrian
Safety



Bicyclist
Safety

Product Solution Used

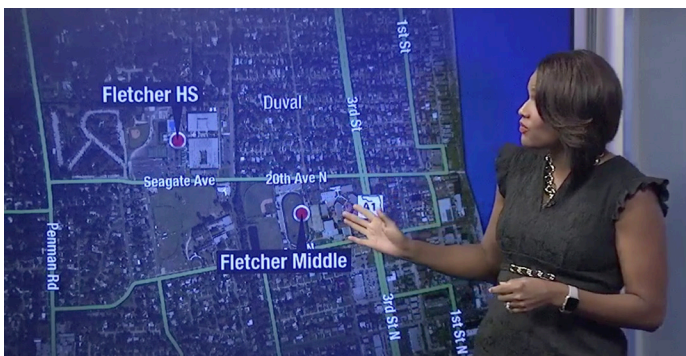


Orca Lane Separator™

The Problem

After yet another close call, School administrators in cooperation with the city of Neptune Beach and even the Parent Teacher Association came together to discuss solutions BEFORE the unthinkable happened. It became such an issue, local television did a story about the troubled spot

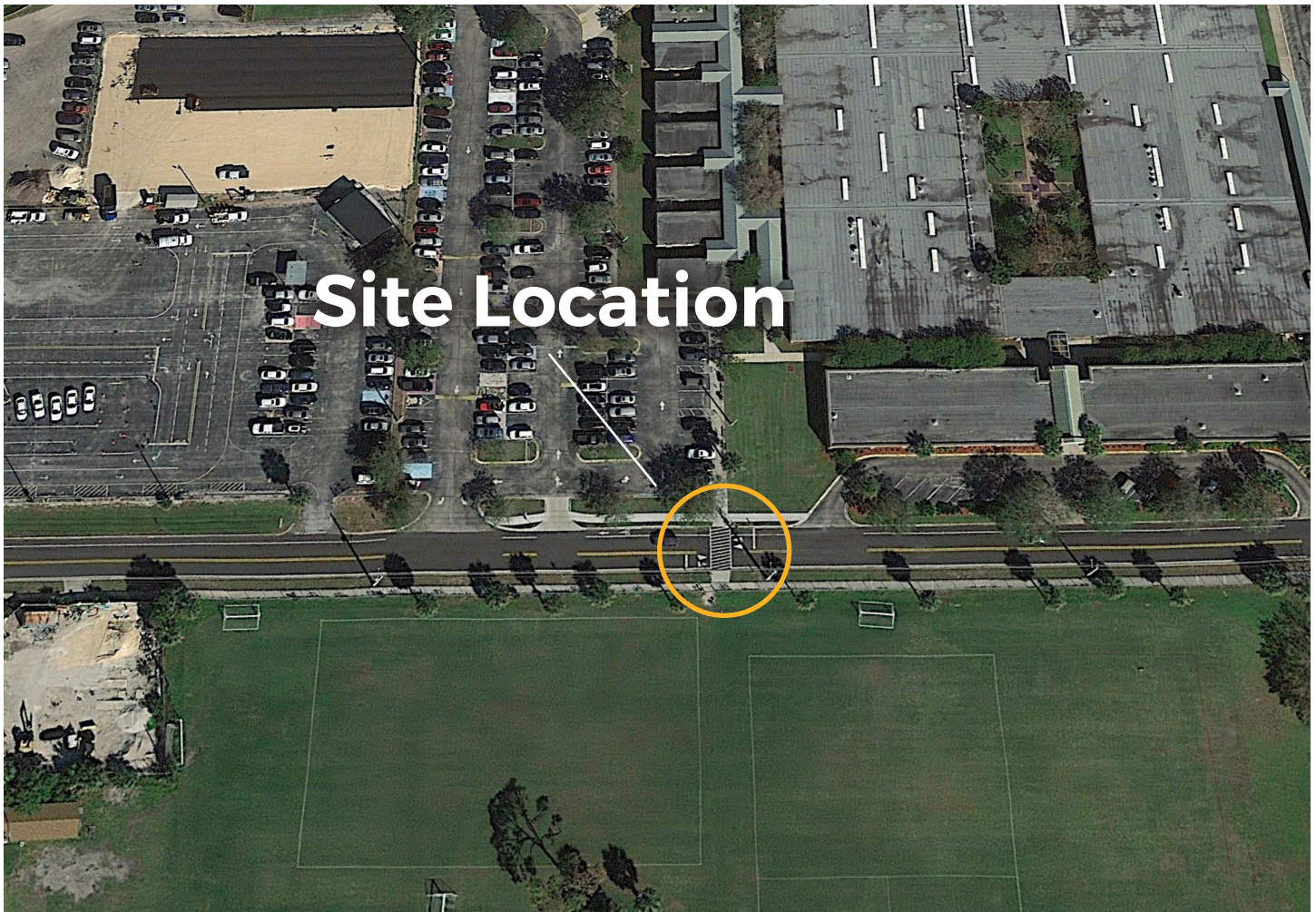
<https://www.news4jax.com/news/leaders-trying-to-make-getting-to-school-safer-at-fletcher>



The area is a particular challenge because Seagate Avenue separates school grounds from the athletic fields where potentially hundreds of students cross to practice after school sports. The most dangerous time is about 3pm when parents are arriving to pick up students. Traffic backs up and other impatient drivers try to go around the line.

The Solution

The solution was multi-faceted with a raised crosswalk as traffic speed countermeasure together of course, with the accompanying pavement markings. While effective, they went one step further to install a product offered exclusively through Professional Pavement Products. The Orca Lane Separator™ is by design a lane separator. It is used throughout the United States and England for lane control in instances where there needs to be an additional barrier between pedestrians, bicyclists and motorists.



Site Location



Made from durable composites, the Orca is highly customizable and includes flexible posts that can withstand multiple vehicle impacts. This product was chosen for the Fletcher High School project because it raised the visual profile of the crosswalk and provided nighttime visibility because of the retroreflective elements surrounding the post top.

The product is secured by stainless steel bolts and anchors. "It was easier to install than I thought and came together in about 45 minutes. We finished the installation just in time

before school released. It's in there good and not going anywhere. The stuff is durable." said Jeff Paul, city of Neptune Beach project foreman.

When asked of the feedback, Assistant principal, Jeremy Franllin said. "We love it. The most positive comments have come from the students themselves. They still must be diligent and stay off their phones when crossing a street, but at least now they have a designated crossing area. I see them walking out of their way to use it. It makes everyone feel a who lot safer".



PRODUCTS • SERVICE • KNOWLEDGE

Corporate Office:
9556 Historic Kings Rd. S., #315
Jacksonville, FL 32257

888.717.7771 • WWW.PPPCATALOG.COM